



Specifications

The electric boiler shall be a BTH from THERMO 2000 Inc. ,model BTH _____ with a 6 US gallon capacity. The net capacity of the boiler is _____ BTU/HR or _____ kW at a voltage of 240V single-phase () or 600V three-phase () and a frequency of 60 hertz. The boiler must exhibit 100% efficiency. When required by law, the tank shall be manufactured according to the CSA B-51-03 standard and will bear a CRN number which meets section IV of the ASME Boiler and Pressure Vessel Code. The tank shall be made of high-carbon steel. The tank shall have a maximum operating pressure of 30 psi and shall undergo a 60 psi hydrostatic test as per the ASME code. The boiler shall be equipped with a steel collector, located on top of the tank, to act as a boiler water outlet, and with a steel injector, located at the bottom of the tank, to evenly spread the boiler water inlet. The tank shall be equipped with a drain cock. The boiler shall be wrapped in a 2 inch thick insulating jacket. The outer shell shall be of 20-gauge thickness and epoxy-coated. The boiler shall be shipped from the plant equipped with a safety relief valve as per the ASME code, adjusted to a 30 psi setting, a thermomanometer and a kit of wall mounting brackets. Electrical connections will be made with 3-conductor cable in the case of the 240V and 600V models. The square flange immersion heating elements are low-density and with copper sheathing. Each element must be replaceable. The boiler must allow multi-stage power modulation and a pilot lamp is required for each stage. For the 240V models, each heating element in the boiler must be controlled by an individual thermostat (aquastat) which closes the circuit at 9°F below the set point and opens the circuit at the set point. For the 600V models, each thermostat (aquastat), closing the circuit at 9°F below the set point and opening it at the set point, must control a resistive 50 amp secondary contactor able to perform 250 000 operations under full load and powering 3 elements. The control circuit must be equipped with a high-limit temperature controller. The boiler, whether a 240V or 600V model, is equipped with one or more resistive 50 amp main load contactors able to perform 250 000 operations under full load, closing the circuit when the boiler temperature is below the fixed set point of the high-limit temperature controller and opening it when the boiler temperature is above the fixed set point of the high-limit temperature controller. The boiler vessel is protected by a 10-year warranty. The boiler shall be tested, certified and bear the CSA seal under CSA standard C22.2 No. 165-92.

THERMO 2000 INC.

500, 9th avenue,
Richmond (Québec) Canada
JOB 2H0
Tel : 819.826.561
Fax : 819.826.6370
www.thermo2000.com



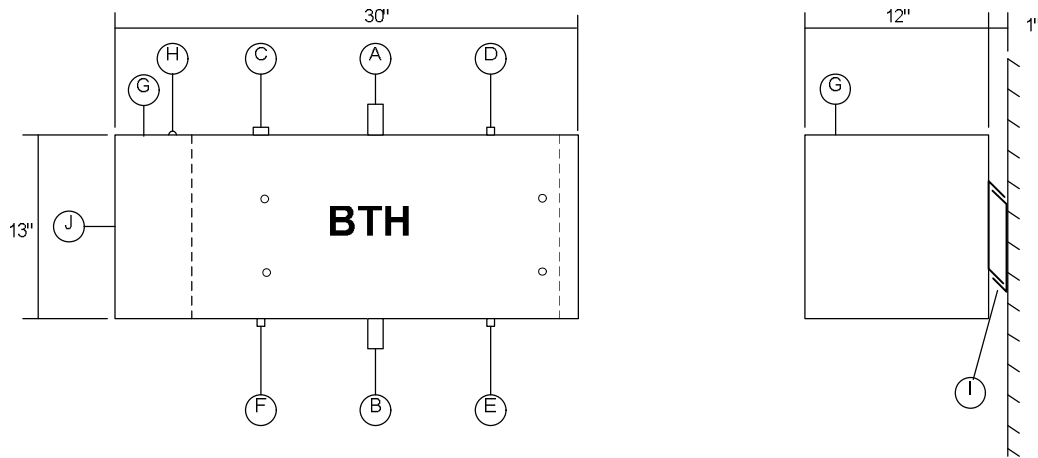
Electric Ratings for 240 VAC (1 phase) Electric Boilers:

Model No.	Electric Elements (in Watts)				Total			Wires		Breakers	Fuse	125%
	A	B	C	D	Watts	Amp.	BTU	CU	AL	Amp.	Amp.	Amp.
BTH 6	3 000	3 000	-----	-----	6 000	25	20 472			50	40	31.2
BTH 8	5 000	3 000	-----	-----	8 000	33.3	27 296	8	6	50	50	41.3
BTH 10	5 000	5 000	-----	-----	10 000	41.6	34 120	6	6	60	60	52
BTH 12	3 000	3 000	3 000	3 000	12 000	50	40 944	6	4	70	70	62.5
BTH 15	3 000	4 500	3000	4 500	15 000	62.5	51 180	4	3	100	80	78.2
BTH 18	4 500	4 500	4500	4 500	18 000	75	61 416	3	2	100	100	93.8
BTH 20	5 000	5 000	5000	5 000	20 000	83.4	68 240	3	1	125	110	104
BTH 24	6 000	6 000	6000	6 000	24 000	100	81 888	1	0	125	125	125
BTH 27	3 x 4 500		3 x 4 500		27 000	112.5	92 124	1	0	150	150	140
BTH 30	3 x 5 000		3 x 5 000		30 000	125	102 360	2/0	3/0	200	175	156
BTH 33	3 x 5 000		3 x 6 000		33 000	138	112 596	2/0	3/0	200	200	172

Electric Ratings for 600 VAC (3 phases) Electric Boilers:

Model No.	Side A		Side B		Total			Wires	Fuse
No.	Quantity	Watts	Quantity	Watts	kW	Amp.	BTU	RW-90	HRC % \geq
BTH 9	3	3 000	-----	-----	9	8.7	30 708	14	15 A
BTH 13	3	4 500	-----	-----	13.5	13	46 062	12	20 A
BTH 18	3	3 000	3	3 000	18	17	61 416	10	30 A
BTH 22	3	3 000	3	4 500	22.5	22	76 770	10	30 A
BTH 27	3	4 500	3	4 500	27	26	92 124	8	40 A
BTH 30	3	5 000	3	5 000	30	29	102 360	8	40 A
BTH 36	3	6 000	3	6 000	36	35	122 832	8	50 A

Note: 1 kW =3,412Btu



Legend :

- A. Boiler Water Supply Connection (1 inch diameter, NPT male)
- B. Boiler Water Return Connection (1 inch diameter, NPT male)
- C. Safety Relief Valve (3/4 inch NPT female)
- D. Temperature & Pressure Gage (1/2 inch NPT female)
- E. Drain Valve (1/2 inch NPT female)
- F. Fill Water Connection (1/2 inch NPT female)
- G. Electric Line Knock-Out (1 inch)
- H. Pilot Light
- I. Boiler Wall Hanging Brackets (2 units)
- J. Electrical Compartment (Could be located on the other side if the wall mounting bracket is installed on the opposite side)